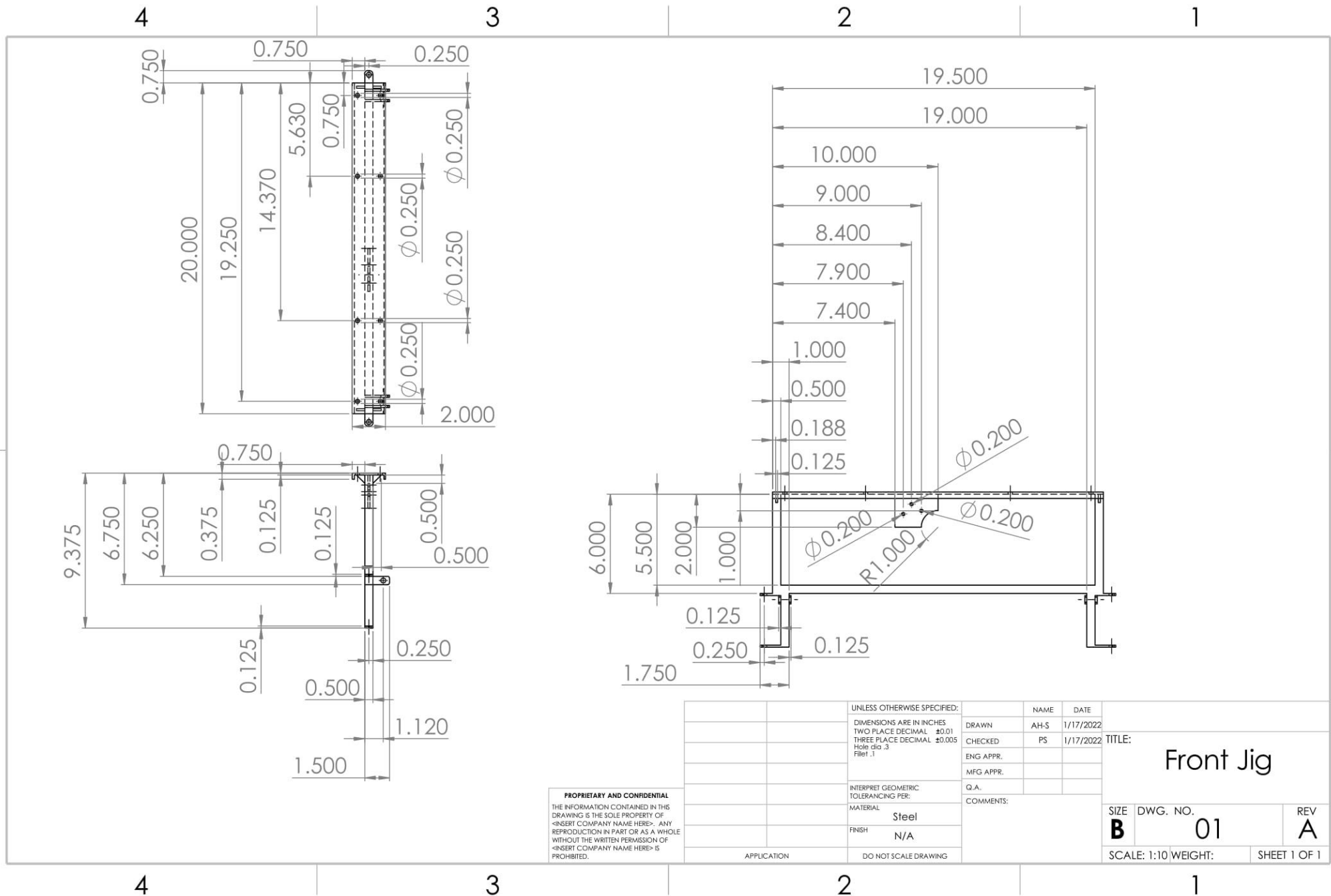


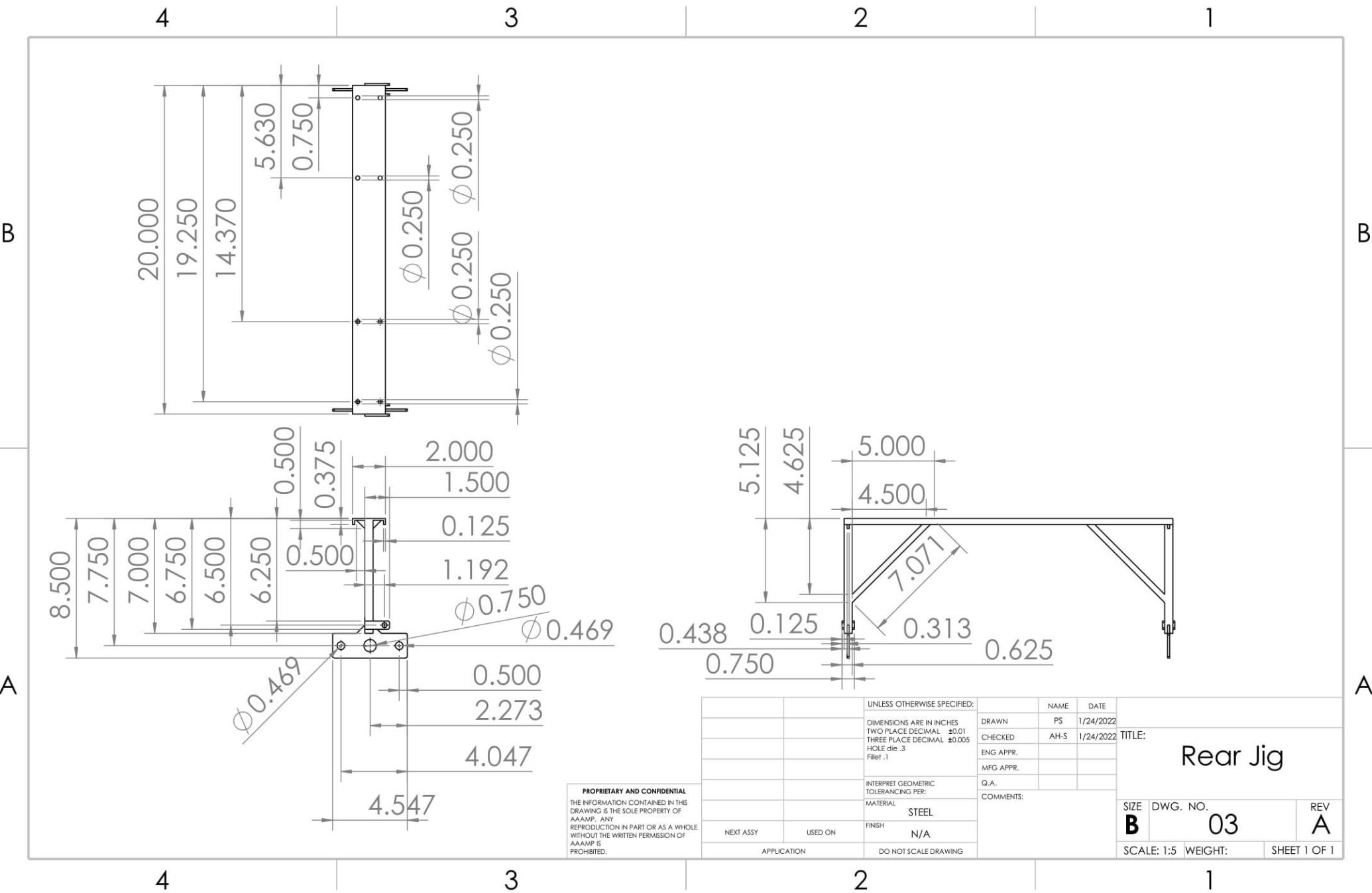


Initial Cad Drawing

1/17/2022

Andrew Harper-Smith	70%
Parmvir Singh	20%
Amanda Harkleroad	10%





PROPRIETARY AND CONFIDENTIAL
 THE INFORMATION CONTAINED IN THIS DRAWING IS THE SOLE PROPERTY OF AAAMP. ANY REPRODUCTION IN PART OR AS A WHOLE WITHOUT THE WRITTEN PERMISSION OF AAAMP IS PROHIBITED.

		UNLESS OTHERWISE SPECIFIED:		NAME	DATE	TITLE: Rear Jig	
		DIMENSIONS ARE IN INCHES		DRAWN	PS		1/24/2022
		TWO PLACE DECIMAL ±0.01		CHECKED	AH-S		1/24/2022
		THREE PLACE DECIMAL ±0.005		ENG APPR.			
		HOLE die .3 Filet .1		MFG APPR.			
		INTERPRET GEOMETRIC TOLERANCING PER:		Q.A.			
		MATERIAL		COMMENTS:			
		STEEL				SIZE DWG. NO. REV	
		FINISH				B 03 A	
NEXT ASSY	USED ON	APPLICATION		DO NOT SCALE DRAWING		SCALE: 1:5 WEIGHT: SHEET 1 OF 1	



<p>PROPRIETARY AND CONFIDENTIAL THE INFORMATION CONTAINED IN THIS DRAWING IS THE SOLE PROPERTY OF AAAMP. ANY REPRODUCTION IN PART OR AS A WHOLE WITHOUT THE WRITTEN PERMISSION OF AAAMP IS PROHIBITED.</p>			UNLESS OTHERWISE SPECIFIED:		NAME	DATE	<p>TITLE: Rear Axle</p>
			DIMENSIONS ARE IN INCHES Hole dia. .3 unless otherwise noted	DRAWN	AH	1/31/2022	
				CHECKED	AH-S	1/31/2022	
				ENG APPR.			
				MFG APPR.			
			INTERPRET GEOMETRIC TOLERANCING PER:	Q.A.			
			MATERIAL	COMMENTS:			
			Steel				
			FINISH				
	NEXT ASSY	USED ON	N/A				
	APPLICATION		DO NOT SCALE DRAWING				
				SIZE	DWG. NO.	REV	
				A	12		
				SCALE: 1:5	WEIGHT:	SHEET 1 OF 1	