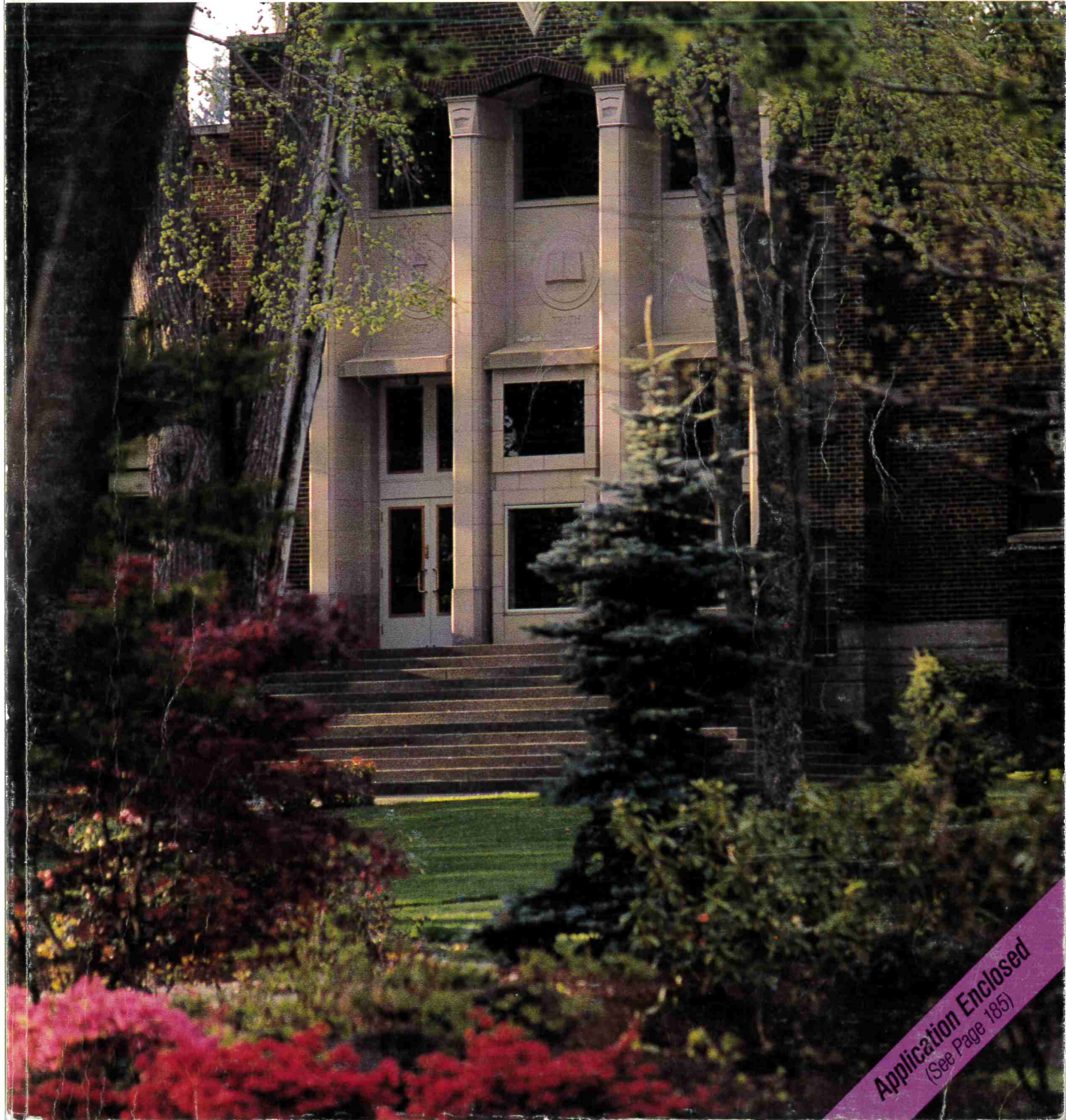


1989/90



*Seattle Pacific University*

# Catalog



**Application Enclosed**  
(See Page 185)



## Welcome to Our Campus

The year was 1891 when a handful of Free Methodist pioneers established a school in Seattle called Seattle Seminary. Located on the north slope of what is now Queen Anne Hill, the school consisted of only one building, Alexander Hall.

As the student body grew, so did the Seminary, becoming Seattle Pacific College in 1915 and Seattle Pacific University in 1977. Today the Free Methodist Church remains the sponsoring denomination for SPU and its 3,300 students.

Although located in a primarily residential district, SPU is just minutes away from the heart of downtown shopping, entertainment and restaurants. SPU students find the peace to study but still enjoy the opportunities of a large city.

There's more to the SPU campus than meets the eye. One and a half hours away on Puget Sound's Whidbey Island is SPU's 135-acre Camp Casey. This rural, beachfront property is used for environmental studies, recreation and academic workshops. Blakely Island in the San Juans, just south of Vancouver Island, provides 965 acres of wilderness campus for marine field study and research.

Whether on the beachfronts of Casey or Blakely, or near the heart of downtown Seattle, SPU's three campuses offer students a unique learning environment to pursue their college education.

## Our Great Pacific Northwest

Surrounded by a generous network of waterways, SPU lies in the heart of Puget Sound country, the entry port for a world-wide shipping industry. A bustling waterfront offers the best in seafood dining, curio shops and visitor attractions. Take a sail boat out on Lake Washington. Or take a lunch aboard one of several superferries that make daily trips to the San Juans and other islands.

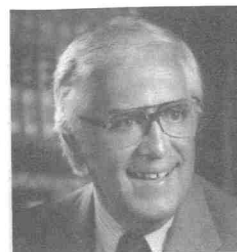
For summer and winter sports, there's beautiful Mt. Rainier. A majestic year-round backdrop to the Seattle skyline, Mt. Rainier provides an invigorating challenge to avid hikers and mountain climbers in the summer. Excellent skiing facilities in the Cascades are just an hour's drive from campus. Few schools can boast of an environment like Seattle Pacific University's.





Seattle Pacific nurtures students toward God-honoring roles in society through a comprehensive liberal arts education that is both academically sound and distinctly Christian. Through this experience, SPU equips students to make a positive difference in the lives of the people they encounter.

David C. Le Shana  
President



## Defining our Christian Mission

In the beginning, God called His creation good. Because of this, we at Seattle Pacific University feel a divine responsibility to study God's creation — the universe, our societies, our cultures and our lives. This is our ultimate purpose as an evangelical Christian liberal arts university.

However, although God called His creation good, human beings have usurped His authority by attempting to take control of their own futures. Life on earth has become broken and distorted.

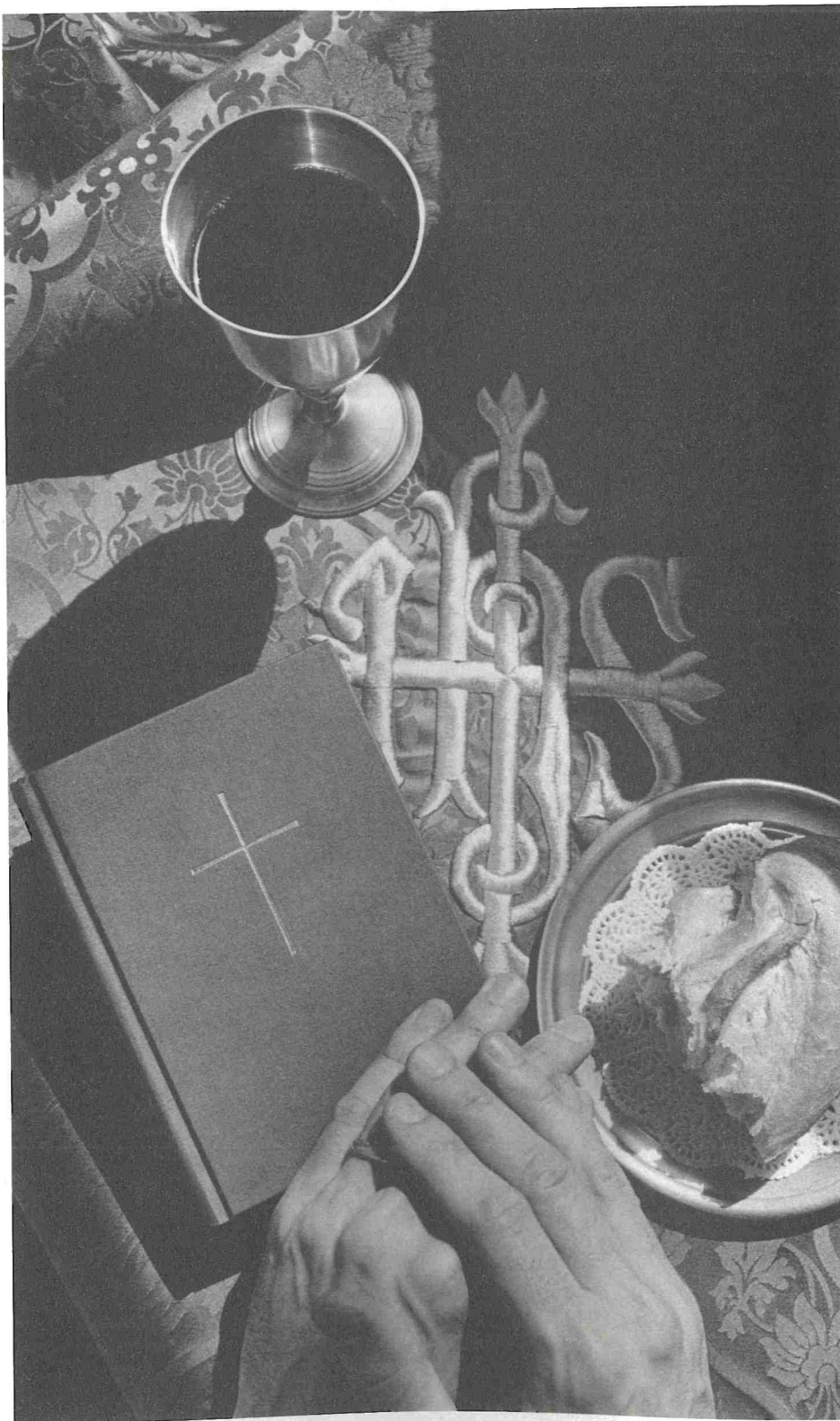
Yet God, in His infinite love, seeks to restore human beings to their original wholeness. He came to earth in the God-man Jesus Christ to show us how we should live. By dying, Christ paid the price of our wrongdoing and offers a loving forgiveness. His bodily resurrection guarantees our ultimate victory over sin and death. His Holy Spirit fills us with the power to love. And, He will return to complete history.

Our response to God's love is gratitude and joy. Care and concern for other human beings and for creation take on new meaning. Through acts of caring we learn by following Christ's example that to lead is to serve.

Students and faculty are challenged to follow this example by developing a scholar's mind while turning their classroom knowledge into acts of service in the world. The scholar-servant then becomes a living example of Christian leadership — at home, on the job and in the world community. Leading through serving becomes the ultimate life-product of all who seek to follow in Christ's footsteps.

In affirming the great tenets of the Christian faith, Seattle Pacific stands unequivocally for (1) the inspiration of the Old and New Testaments, (2) the deity of Christ, (3) the need and efficacy of the atonement, (4) the new birth as a divine work carried out in the repentant heart by the Holy Spirit, (5) the necessity and glorious possibility for the Spirit-filled Christian to live a life of victory over sin, and (6) the personal return of the Lord Jesus Christ.

Members of the University community seek to nurture this faith by the expression of concern for each other in all aspects of University life.





## Becoming Scholars and Servants

The academic program at Seattle Pacific University is characterized by a community of learners seeking to help each other attain lives of wholeness through scholarship and service.

As part of the academic process, each member of the University community is expected to strive to achieve the following goals:

1. Growth toward mature Christian faith.

Marked by increasing understanding and acceptance of Christian values and lifestyles, this growth depends on Biblical knowledge, reason, knowledge of Christian traditions, and personal experience. Its outcomes include integrity in personal belief and behavior, intelligent choice of lifestyle, service, and dependence on God for guidance.

2. Maturing intellectual, social, spiritual, and emotional judgment.

This entails increasingly balanced self-awareness, self-confidence and self-criticism, integrated in a disciplined and unified personality with a Christian worldview. It includes the ability to empathize, to recognize one's own assumptions, to see many sides of an issue, to see the provisional nature of one's grasp on truth, to live toward increasing clarity of moral and religious commitment, to come to decisions based on thorough critical deliberation, and to assume responsibility for these decisions.

3. Specialized learning, built on a foundation in liberal learning.

University education, fully understood, includes acquisition of a body of knowledge in a broad spectrum of natural and social sciences, philosophy and religion, the humanities and the fine arts, coupled with depth in one or more areas of subject matter. Undergraduate programs focus specifically on both of these aspects; graduate programs and goals for other learners build on liberal education with additional depth in specializations.

4. Skills in reasoning, judgment, and communication.

These include, among others, competence in — problem-solving (inductive and deductive reasoning, problem for-

mulation, solution strategies, accurate computation, effective use of information and data-collecting technologies, coping with unfamiliar life settings); — discrimination (theory and practice of aesthetic discrimination, broad synoptic understanding, ability to balance scientific clarity with mystery and miracle, commitment to reason linked with tolerance for ambiguity, ability to evaluate evidence, make relevant judgments, and form complex, abstract, and integrative conclusions); — verbal communication (competence in English reading, writing, listening, and speaking); and — non-verbal communication (interpreting and expressing ideas inherent in the artistic languages).

5. Synthesis of academic knowledge, Christian values and personal behavior.

Growing Christians are committed to apprehend and apply truth as a whole, to develop congruent beliefs and behaviors, and to integrate these within a Christian worldview.

6. Aesthetic appreciation and creative expression.

Living with wholeness means that the individual develops cognitive and affective criteria for appreciating the aesthetic qualities of life, valuing and developing creative potential, imagination and intuition in order to improve the total environment.

7. Attitudes contributing to bodily fitness.

Wholeness implies, in addition to spiritual and mental health, care for the body: understanding of how physical well-being contributes to personal fulfillment and ability to work; adoption of values and a lifestyle which take account of the need for proper nutrition, work habits and exercise.

8. Growing interpersonal and cultural sensitivity.

Effective Christian education encompasses informed and accepting appreciation of individual and cultural distinctives and diversity; capacity to live responsibly in community; and commitment to developing an increasingly global perspective.

9. Awareness of personal purpose with unique, creative self-expression.

Because individual human beings are uniquely created and gifted by God to pursue meaningful lives, we seek to help them find their particular purpose for being in concert with the larger purposes of God in the world.

10. Development of competency in the context of Christian vocation.

"Vocation," or "calling," denotes more than merely "work," and derives from awareness of needs and opportunities in a complex world as well as personal preference and ambition. One's vocation may be lived out through a variety of roles, circumstances, and opportunities. It includes understanding and valuing of purposeful work, commitment to the value of avocational interests, mastery of a single discipline sufficient to provide a foundation for a career, and the recognition that vocation is a calling to follow the will of God through all of life.

11. Commitment to lifelong learning.

This encompasses dedication to expanding personal, professional, and general knowledge; and to continuing critical thinking, creative exploration, and a spirit of inquiry which work to increase the fund of knowledge. It emphasizes the processes and methods of learning as well as the content studied.

In nine separate schools and 56 undergraduate majors, SPU's curriculum places a strong emphasis on an interdisciplinary approach. An appreciation for inter-related subjects, expanded career opportunities and a greater sense of community are all benefits for blending and borrowing from multiple disciplines.

The regular academic year consists of three ten-week quarters. A fourth quarter, Summer Session, offers flexible scheduling of more hours per day but shorter terms. Between quarters, interterm courses have recently taken students as far away as England, Hawaii, Alaska, and Singapore. Summer study tours also offer overseas travel.

SPU offers an academic program where the seeds of scholarship and service are sown and where the rewards to be reaped will last a lifetime.



## Social Expectations

All of us are impacted by behavioral expectations. In addition to the expectations we may have for our own behavior, we expect certain kinds of behavior from others. Conflict or confusion occurs when we are unaware of expectations or when we cannot or will not live up to them. To avoid such conflict, we want you to know what is expected of members of the Seattle Pacific University community.

Seattle Pacific's standards for behavior reflect the University's ongoing commitment to its Evangelical Christian heritage. Evangelical Christians are guided by the Biblical standards of moral integrity, social consciousness, personal health and an effective Christian witness. The University's behavioral standards are designed to provide a positive learning environment and to promote the intellectual, social, spiritual and physical well being of students. *It is important to remember that your admission to the University is based, in part, upon your agreement to abide by these expectations. In other words, by enrolling at Seattle Pacific University, you agree to live according to the behavioral expectations outlined in the Catalog and thoroughly explained in Nexus.*

To encourage individual behavior under these standards and to ensure a spirit of Christian community, the University does not permit students to: 1) participate in cohabitation and/or sexually immoral conduct, including extramarital and homosexual activity; 2) violate local, state or federal laws; 3) participate in activities which disrupt the educational process of the University; 4) use or possess tobacco, alcoholic beverages or illegal drugs or abuse either prescription or non-prescription drugs; 5) participate in acts which involve gambling or dishonest behavior; 6) participate in acts which involve racial, sexual and/or other forms of harassment. Students participating in these activities are subject to denial of admission, cancellation of registration and/or disciplinary action. However, the University maintains respect and concern for each individual and provides a redemptive procedure with application of the principles of due process. In order to maintain an effective Christian witness, students are expected to avoid questionable practices of entertainment, conduct and appearance. Social dancing is not permitted on campus or off campus as a University sponsored or University related activity.

A student's signature on the application for admission signifies an agreement to support and conform to the social standards of Seattle Pacific University. Non-matriculated students admitted to special programs of the University are expected to acknowledge these goals by maintaining the personal standards of the institution while on campus or while involved in University related activities.

## Ombudsman

The service of the Ombudsman is available to all students to assist in the resolution of problems and to enable the Seattle Pacific community to better meet students' needs. Working together with University staff and the student, the Ombudsman seeks to expedite communication to solve problems.

Upon request, the student is apprised of the appropriate process of appeal within any office or area of the University. To appeal a decision to the Ombudsman, a student must first complete the office or area process of appeal. This process is typically a written appeal to the department head, the director or an appeals committee within the office or area.

If the student is not satisfied that his or her interests were properly served by the area appeal process, an appeal may be brought to the Ombudsman for final review. The appeal should include all information which was submitted through the area appeal process. The Ombudsman will review the written materials and discuss the appeal with the director or department head involved and with the student.

The decision of the Ombudsman will be communicated in writing to the student within two working days. A copy of the letter will be sent to the department head or area director. The decision of the Ombudsman is final.