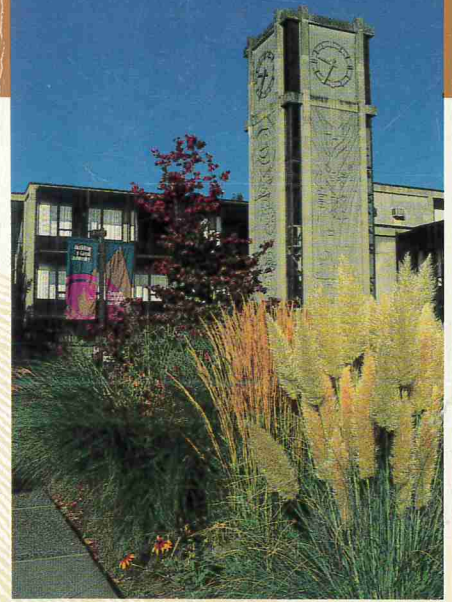


SEATTLE PACIFIC UNIVERSITY

1993/94 Catalog



Application Enclosed

About Seattle Pacific University

"As a community of learners, Seattle Pacific University seeks to educate and prepare students for service and leadership. We are committed to evangelical Christian faith and values, and to excellence in teaching and scholarship for the intellectual, personal and spiritual growth of students."

Mission Statement Seattle Pacific University

A Contemporary Classic

If you're looking for an education which blends classic scholarship with meaningful applications in a changing world, then Seattle Pacific University is an excellent choice.

SPU is a flourishing Christian university of the arts, sciences and professions serving nearly 3,400 students. Its campus is located in a residential neighborhood just minutes from downtown Seattle, the business and cultural heart of the Northwest.

Fully accredited, Seattle Pacific's academic disciplines set very high standards for students. Undergraduate students are not taught by graduate assistants, but by experienced professors recognized locally and nationally for the quality of their scholarship. Small classes mean students actively participate in their own education, gaining the confidence to achieve their goals. And the University's clear Christian commitment gives depth and perspective to classroom learning, balancing knowledge with values.

Complementing the academic program is the University's emphasis on service. Beginning with freshman orientation, SPU students act upon their faith in local service agencies and around the world.

A degree from Seattle Pacific University means something special. It not only identifies individuals of significant academic achievement, but people of integrity. This combination is a powerful one that opens doors to further study, a challenging career and world service.

Defining Our Christian Mission

In the beginning, God called His creation good. Because of this, we at Seattle Pacific University feel a divine responsibility to study God's creation — the universe, our societies, our cultures and our lives. This is our ultimate purpose as an evangelical Christian university.

However, although God called His creation good, human beings have usurped His authority by attempting to take control of their own futures. Life on earth has become broken and distorted.

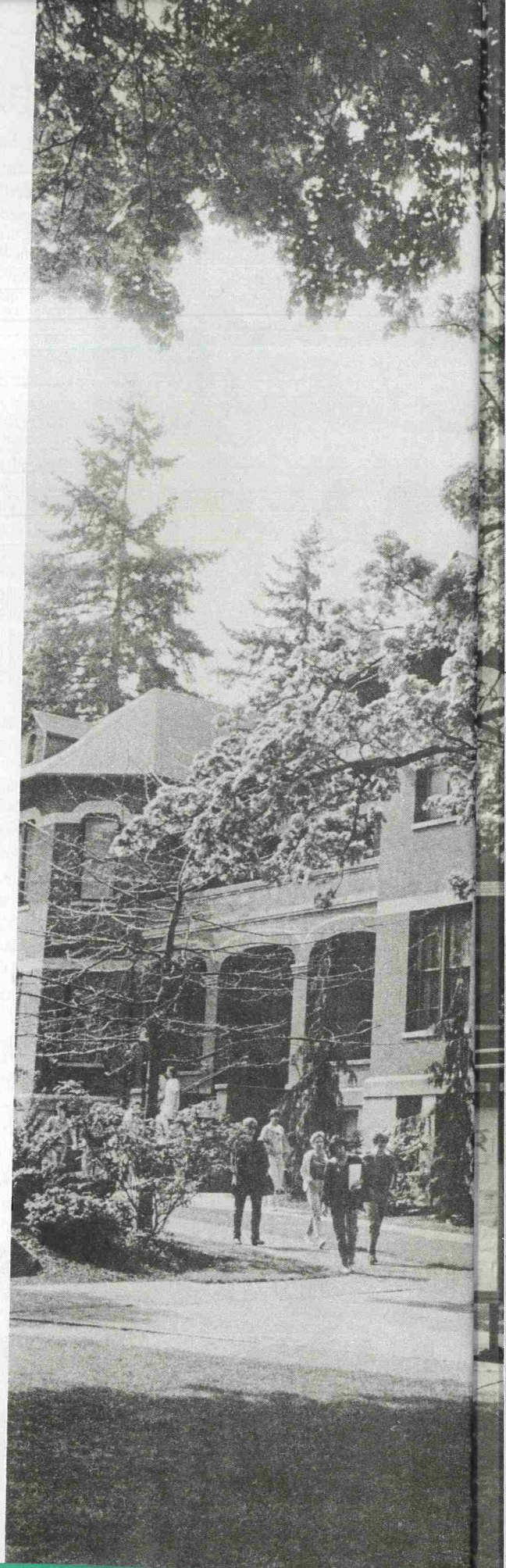
Yet God, in his infinite love, seeks to restore human beings to their original wholeness. He came to earth in the God-man Jesus Christ to show us how we should live. By dying, Christ paid the price of our wrong-doing and offers a loving forgiveness. His bodily resurrection guarantees our ultimate victory over sin and death. His Holy Spirit fills us with the power to love. And, He will return to complete history.

Our response to God's love is gratitude and joy. Care and concern for other human beings and for creation take on new meaning. Through acts of caring we learn by following Christ's example that to lead is to serve.



"Believing that our faith calls us to excellence, both academically and spiritually, Seattle Pacific actively strives to provide the highest quality education available — not for the sake of what students will know, but who they will become. To that end, our task is a noble one that truly effects change through the lives of our students and alumni."

Curtis A. Martin
President





Students and faculty are challenged to follow this example by developing a scholar's mind while turning their classroom knowledge into acts of service in the world. The scholar-servant then becomes a living example of Christian leadership — at home, on the job and in the world community. Leading through serving becomes the ultimate life-product of all who seek to follow in Christ's footsteps.

In affirming the great tenets of the Christian faith, Seattle Pacific stands unequivocally for (1) the deity of Christ, (2) the inspiration and authority of the Old and New Testaments, (3) the need and efficacy of the atonement, (4) the new birth as a divine work carried out in the repentant heart by the Holy Spirit, (5) the necessity and glorious possibility for the Spirit-filled Christian to live a life of victory over sin, and (6) the personal return of the Lord Jesus Christ.

Members of the University community seek to nurture this faith by the expression of concern for each other in all aspects of University life.

Becoming Scholars and Servants

The emphasis on scholarship and service at Seattle Pacific University enables each student to prepare for a balanced, creative and productive life.

Specifically, SPU seeks to help students achieve the following goals:

1. Growth toward mature Christian faith.
2. Maturing intellectual, social, spiritual and emotional judgment.
3. Specialized learning, built on a foundation in liberal learning.
4. Skills in reasoning, judgment and communication.
5. Synthesis of academic knowledge, Christian values and personal behavior.
6. Aesthetic appreciation and creative expression.
7. Attitudes contributing to bodily fitness.
8. Growing interpersonal and cultural sensitivity.
9. Awareness of personal purpose with unique, creative self-expression.
10. Development of competency in the context of Christian vocation.
11. Commitment to lifelong learning.

Seattle and the Pacific Northwest

Few Christian universities can claim the natural and cultural advantages of one of America's "Most Livable Cities."

A gateway to Canada and the Pacific rim, Seattle is virtually surrounded by water. Seagulls, bridges and ferryboats are part of everyday life. Bordered on two sides by mountains, Seattle offers easy access to a wide variety of outdoor recreation such as skiing, hiking and camping. SPU's own campuses on Blakely and Whidbey Islands are not only ideal for studies in the sciences — they're great getaways as well.

There's no limit to discovery when you live and study in the cultural heart of the Northwest. Seattle's world class fine arts include opera, theatre, symphony and ballet, as well as numerous art museums. Athletics is a vital part of the city, too. Seattle is home to three major league sports franchises: the Seattle SuperSonics (basketball), Seahawks (football) and Mariners (baseball).

Combining classroom education with practical experience is the best way to master a subject — and Seattle's urban opportunities offer that link. As part of their educational program, many students work 10 to 20 hours per week for organizations such as Boeing, Microsoft, KIRO TV, the Empty Space Theatre and the Fred Hutchinson Cancer Research Center.

Student Life

A complete understanding of education recognizes that learning occurs both in and out of the classroom. At Seattle Pacific University, there is a strong commitment to academic discipline through the study of literature, business, science and the arts. We also value the personal and community experiences that enhance our capacity to love; we seek to develop an understanding of integrity and justice. These qualities, along with the ability to work hard and learn, are an integral part of SPU's model of education. The Office of Student Life is dedicated to fulfilling and enriching the goal of Seattle Pacific University by providing educational services and opportunities which develop women and men committed to wholeness through scholarship, leadership, service, and excellence in all endeavors.

COMMUNITY EXPECTATION

As a student of Seattle Pacific University, you are a member of the SPU community. All communities (families, cities, companies) expect that their members will uphold certain standards of behavior and contribute to the welfare of the group in specific ways. The community expectations of the Seattle Pacific community, explained below, are standards of behavior which reflect the University's commitment to its Christian philosophy of education in the context of a Wesleyan heritage.

Christian institutions, like Christian individuals, are guided by the Biblical standards of moral integrity, social consciousness, personal health and an effective Christian witness. The University's behavioral standards are designed to provide a positive learning environment and to promote the intellectual, social, spiritual and physical well being of students. *It is important to remember that your admission to the University is contingent upon your agreement to abide by these expectations. These behavioral expectations are outlined here in the Catalog and more thoroughly explained in the Student Handbook.*

To assimilate the values of corporate worship, integration of faith and learning, and equipping students for Christian leadership and service, the Chapel program has a diversity of options, including morning chapels, faculty-led small groups, urban ministry, special forums, reflection retreats, and more. **All full-time undergraduate students (12 credits or more) are required to earn 15 chapel credits per quarter.**

In keeping with community expectations and to ensure a spirit of Christian community, the University does not permit students to: 1) violate local, state or federal laws; 2) participate in activities which disrupt the educational process of the University; 3) participate in cohabitation and/or sexually immoral conduct, including extramarital and homosexual activity; 4) use or possess tobacco, alcoholic beverages or illegal drugs or abuse either prescription or non-prescription drugs; 5) participate in acts which involve gambling or dishonest behavior; 6) participate in acts which involve racial, sexual and/or other forms of harassment. Students participating in these activities are subject to denial of admission, cancellation of registration and/or disciplinary action up to and

including dismissal from the University. However, the University maintains respect and concern for each individual and provides a redemptive procedure with application of the principles of due process. In order to maintain an effective Christian witness, students are expected to avoid questionable practices of entertainment, conduct and appearance.

A student's signature on the application for admission signifies an agreement to support and conform to the social standards of Seattle Pacific University. Non-matriculated students admitted to special programs of the University are expected to acknowledge these goals by maintaining the social standards of the institution while on campus or while involved in University related activities.

PROGRAMS AND SERVICES

The following programs and services are designed for you to make the most of your education.

Campus Ministries

As a Christian University, Seattle Pacific makes a deliberate attempt to promote the intellectual, spiritual, and social growth of all members of its community within a framework of Christian faith. The first of the educational goals of the University is "growth toward mature Christian faith." Thus, as a part of our educational mission and philosophy, the University seeks to involve students in activities both in and out of the classroom which will expose them to a worldview and lifestyle informed by Christian faith. These include chapels and convocations, lecture series, residence hall fellowships, opportunities to work with less fortunate people in our city and around the world, participation in the activities of a local church, and many other events which may be helpful to a student's growth in faith.

The Office of Campus Ministries sponsors both on-and off-campus programs promoting such growth. **Chapel** is an opportunity to share in various forms of worship and learning and to hear guest and faculty speakers, musical concerts, and to participate in student-led gatherings. Chapel attendance is required of all full-time undergraduate students. Further explanation of this requirement can be found in the *Student Handbook*.

Small groups that explore Christian faith in community exist for the resident and commuter student alike. **Student Ministry Coordinators** are students who are selected to help facilitate ministry opportunities in the traditional residence halls. An all-campus gathering, **Group**, brings 350+ students together for fellowship each week. **Urban Involvement** gives students ministry experience in one of the most dynamic urban centers in America. **SPRINT** prepares and sends students to take part in cross-cultural service on a world-wide scale. Further information on these and other options can be found in the *Student Handbook*, and other publications distributed by the Office of Campus Ministries.

Career Development Center

The move from college to career represents a transition of major importance. The goal of the Career Development Center is to help Seattle Pacific University students make effective choices, plans and transitions based on an understanding of their own abilities, interests, and faith values.

Some of the career exploration services offered are individual counseling, vocational testing and credited classroom instruction. An extensive Career Resources Library contains information on occupations, employers, graduate schools, career planning and job search topics. Discover, a computerized career guidance system, is also available.